

DSA-3100 Firmware Release Note

Firmware: 3.10

Hardware: B1

Date: December 12, 2005

Problems Resolved:

Firmware version **3.10** includes the solved issues below as reported in the previous release of **3.04**

1. To improve the firmware upgrade compatibility, the version of 3.10 is capable to be upgrade from versions of 3.01, 3.02, 3.03 B1 and 3.04
2. To prevent the firmware upgrade operation failure from the double clicks on the Apply button, the effective click is limited on the first one only.
3. To protect the system resource, only 50 concurrent users are limited.

Enhancements:

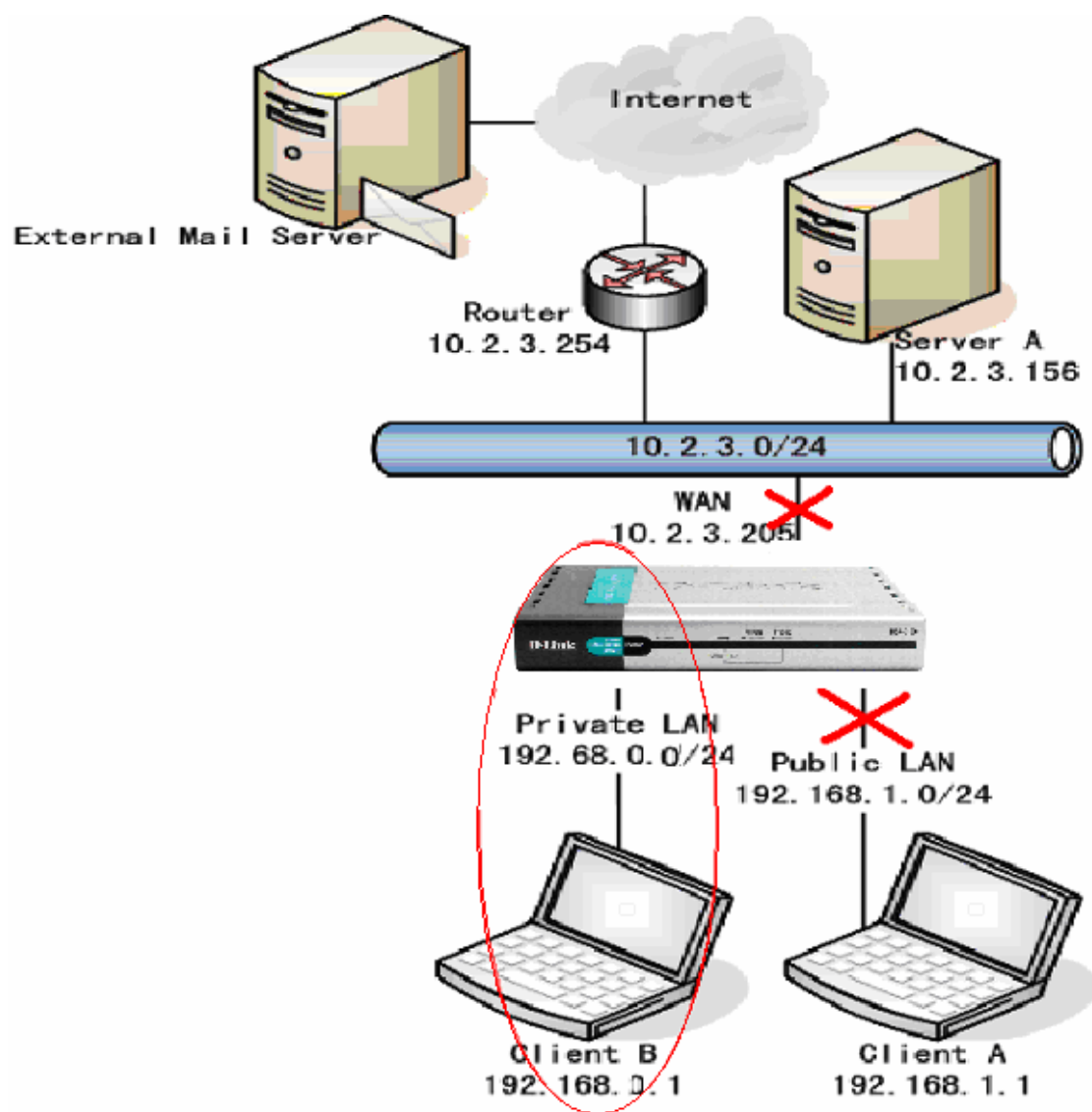
N/A

Note:

1. The saved setting file, the database image file, must be applied on the same version firmware system only, due to the database compatibility issue.
2. The step of "Reset to factory default" at the end of the firmware upgrade procedures is very important to ensure the new system with the proper database.

Upgrade procedures:

In order to upgrade firmware from DSA 3100B (**v3.04**) to DSA 3100B (**v3.10**), suggest to access the system through the private LAN, such as from the client B as shown in the diagram below with the URL of <http://192.168.2.254>, private port interface, to login the administrator system, and. Also please ensure there is no other activity in the system and client B.

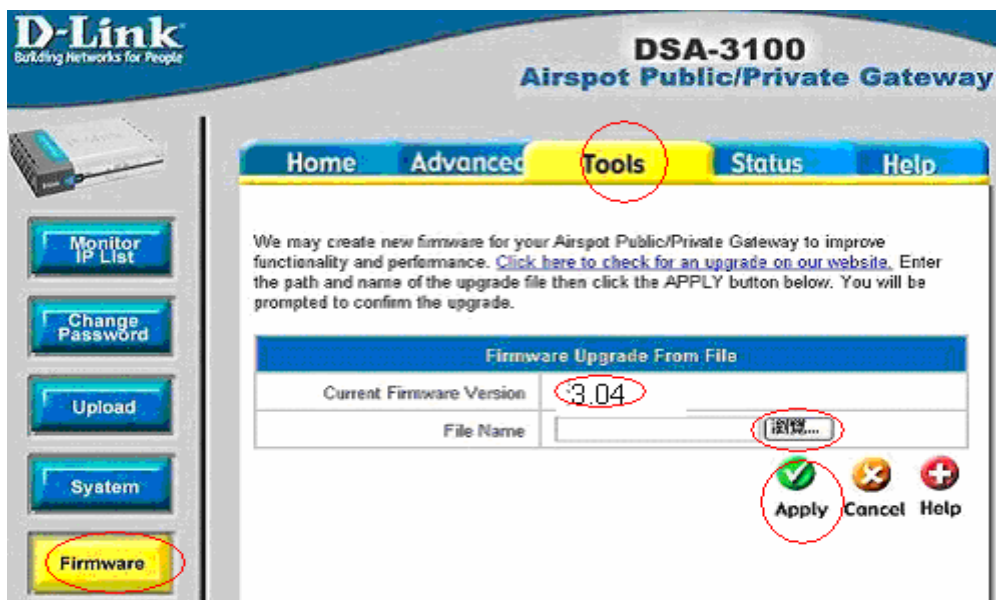


PLEASE FOLLOW THE PROCEDURES LIST BELOW:

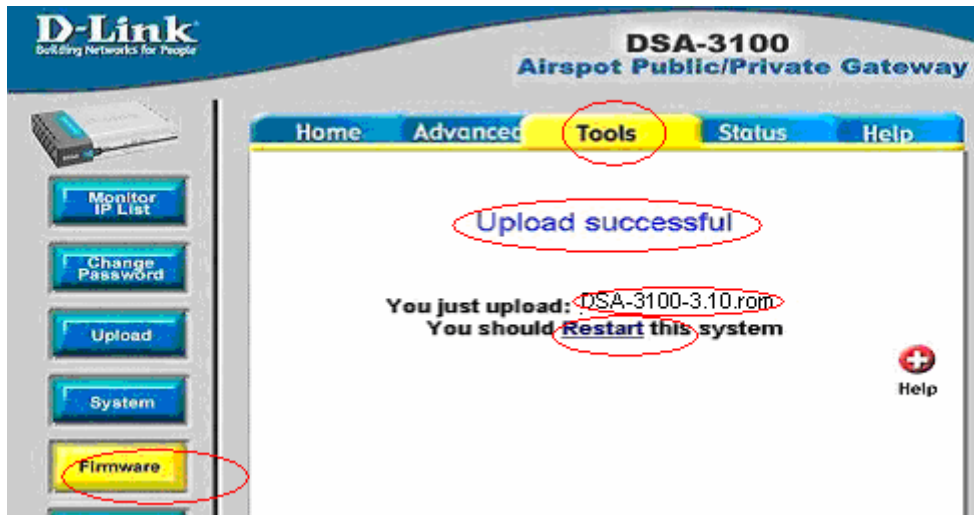
1. Ensure to **record the entire System Settings on paper** and **backup an image file of the System Settings** before doing the Firmware Upgrade because any unexpected event, such as power outage or accident, may cause the current settings lost.
2. Go to Status->Device Info to make sure your current firmware version is DSA 3100 (v3.04)



3. Then, go to Tools → Firmware to specify the path where the firmware, DSA3100B-3.10.rom is located and click apply button.

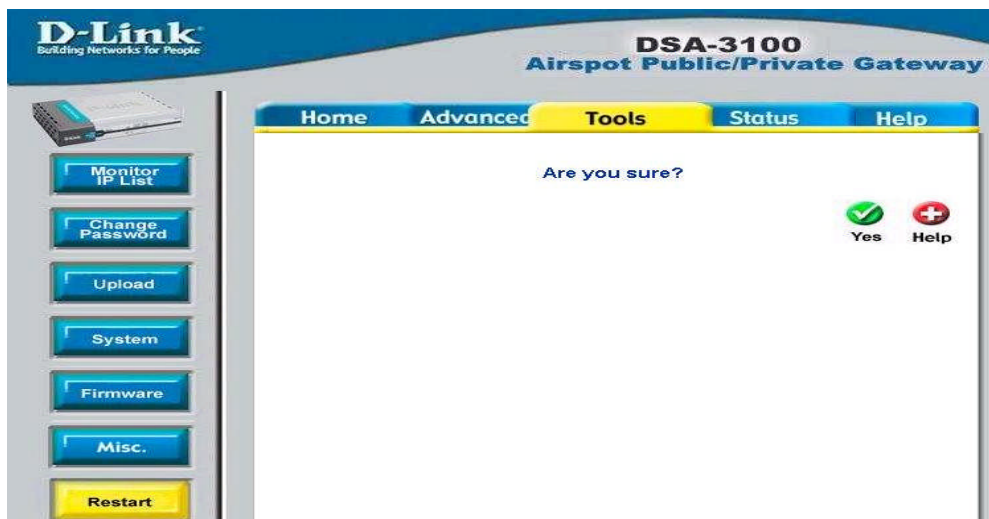


4. **Must wait** (around five minutes) **until get the upload successful message** without interrupt by any other activity, or it may damage the system.



5. After successful message shown, click the 'Restart' to restart the system.

6. Click 'Yes' to restart the system.



7. After restart complete, as Step 2 go to Status → System Status will show the updated version information.
8. Reset To Factory Default, go to Tools → System and click on Reset to ensure the upgraded system with the proper database settings. Please follow the steps to restart the system.

Firmware: 3.04

Hardware: B1

Date: August 03, 2005

Problems Resolved:

Firmware version **3.04** includes the solved issues below.

1. User name too long, the UI will NOT be broken any more.
2. Status/Current Users won't be shown the same user name when quick login after logout with different users from the same PC
3. Kick out record will be shown for RADIUS user
4. The time in the history record will reflect the time zone setting
5. Virtual server is working after expansion to 30 sets of configuration
6. Virtual Server port setting will not be lost
7. Login for two hours the ping function is function well now.
8. Session-timeout of the RADIUS user will not be replaced by the last RADIUS login user, reported from D-Link HQ20050601000001
9. WAN setting now will NOT take effect immediately without restart
10. IP-PNP for Public LAN under NAT is working now
11. PRONTO mode now will not force the Public IP to change to 192.168.4.x
12. Bandwidth control now match the actual data-rate
13. Now, there is no duplicate kick out record in Traffic History
14. WAN port DNS server IP setting now will display the correct IP
15. RADIUS now will send 'Acct-Terminate-Cause'
16. The Change password function from SSH menu now is also changing the password for admin login from WEB UI, even after done with the restore db.
17. PPPoE now is working well when WAN fail function enabled
18. DHCP relay now is working well on LAN if relaying a server from WAN port
19. Airpath now is working well with login schedule enabled.

20. Restore db with a different admin password, now, will NOT redirect the page to the admin login.

Enhancements:

N/A

Note:

1. The Proxy Server feature is not supported with Airpath Authentication for the limitation of the external proxy not allowed to connect the Airpath authentication port.

=====